



# STEP DOWN DIFFUSER ASSEMBLY TO SUIT



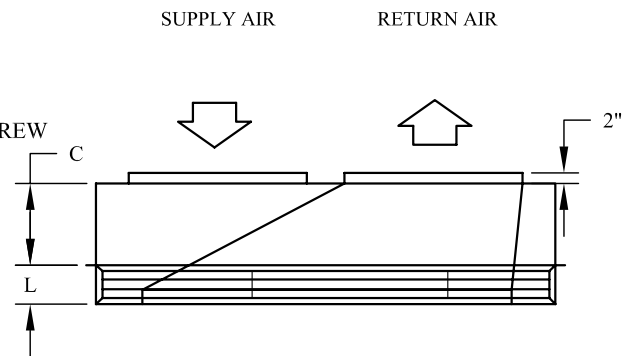
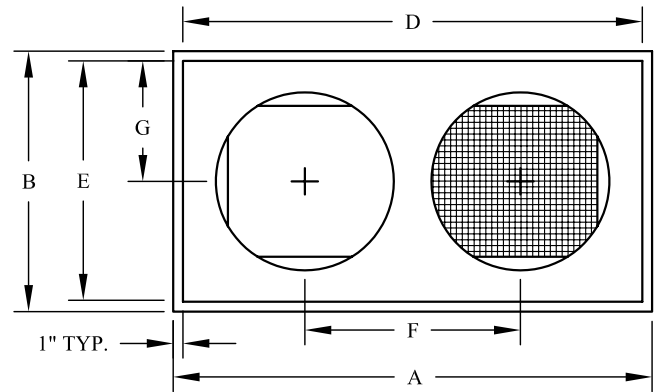
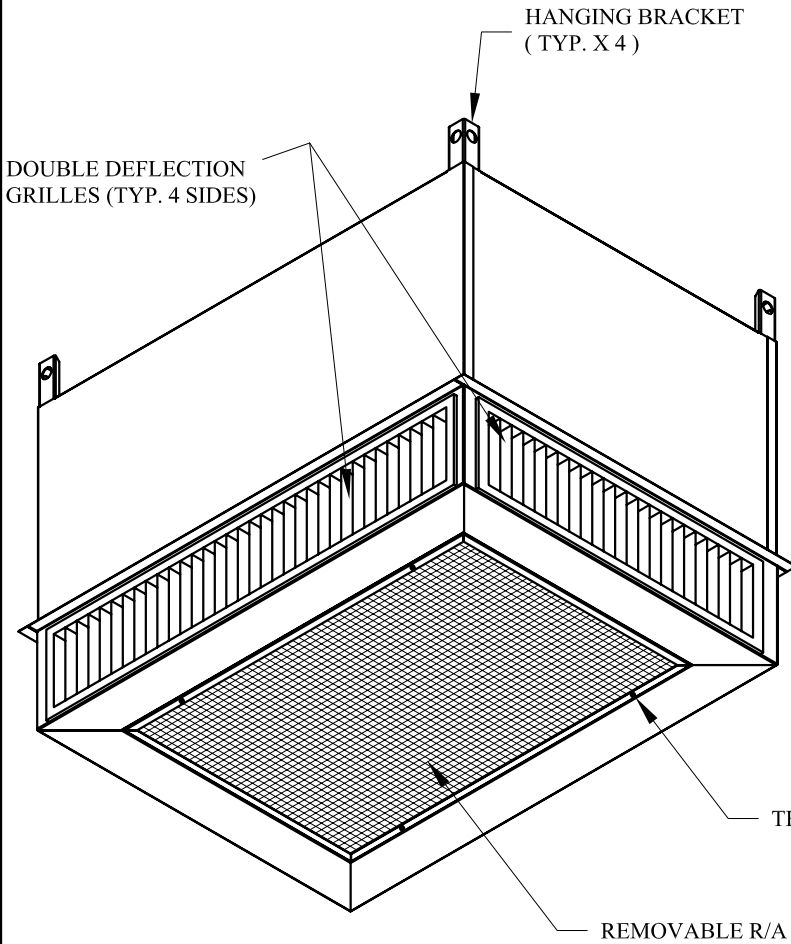
MODEL : RTD11 - 95S

**NOTE:**

- DIFFUSER HEAD TO BE SUPPORTED INDEPENDENTLY FROM BUILDING STRUCTURE

**FEATURES:**

- 24GA (G90) GALVANIZED STEEL CONSTRUCTION
- INTERIOR CABINET INSULATED WITH 1" THICK, 1-1/2 lbs/cu ft UL LISTED DUCT LINER
- INTERIOR TRANSITION INSULATED WITH 1/2" THICK, 2 lbs/cu ft UL LISTED DUCT LINER
- RETURN AIR GRID CORE GRILLE WITH WHITE FINISH
- DOUBLE DEFLECTION GRILLES WITH WHITE FINISH (4 SIDES)
- 20" ROUND DUCT CONNECTIONS
- DIFFUSER FACE WHITE POWDER COAT FINISH
- DIAMETER OF SUPPLY AIR AND RETURN AIR DUCT CONNECTIONS



CAT #	CFM RANGE	THROW (RANGE FT)	DIMENSIONAL DATA								SHPG WEIGHT
			A	B	C	D	E	F	G	L	
13K61	2800-3750	24-41	47-5/8"	29-5/8"	14-3/8"	45-1/2"	27-1/2"	22-1/2"	13-3/4"	8-1/8"	118 LBS

LSDD95

AUG. 16 / 16