

Job: _____
Location: _____
Schedule No.: _____
System Designation: _____

Engineer: _____
Architect: _____
Location: _____
Date: _____
For: Reference Approval Review Construction

Mode Selection Box

FEATURES

Allows simultaneous heating and cooling of multiple zones on VRF Heat Recovery outdoor units.

- Terminal strip connections for indoor units
- Ability to connect up to 40 indoor units

WARRANTY

- 10-year limited warranty.*See warranty for details.

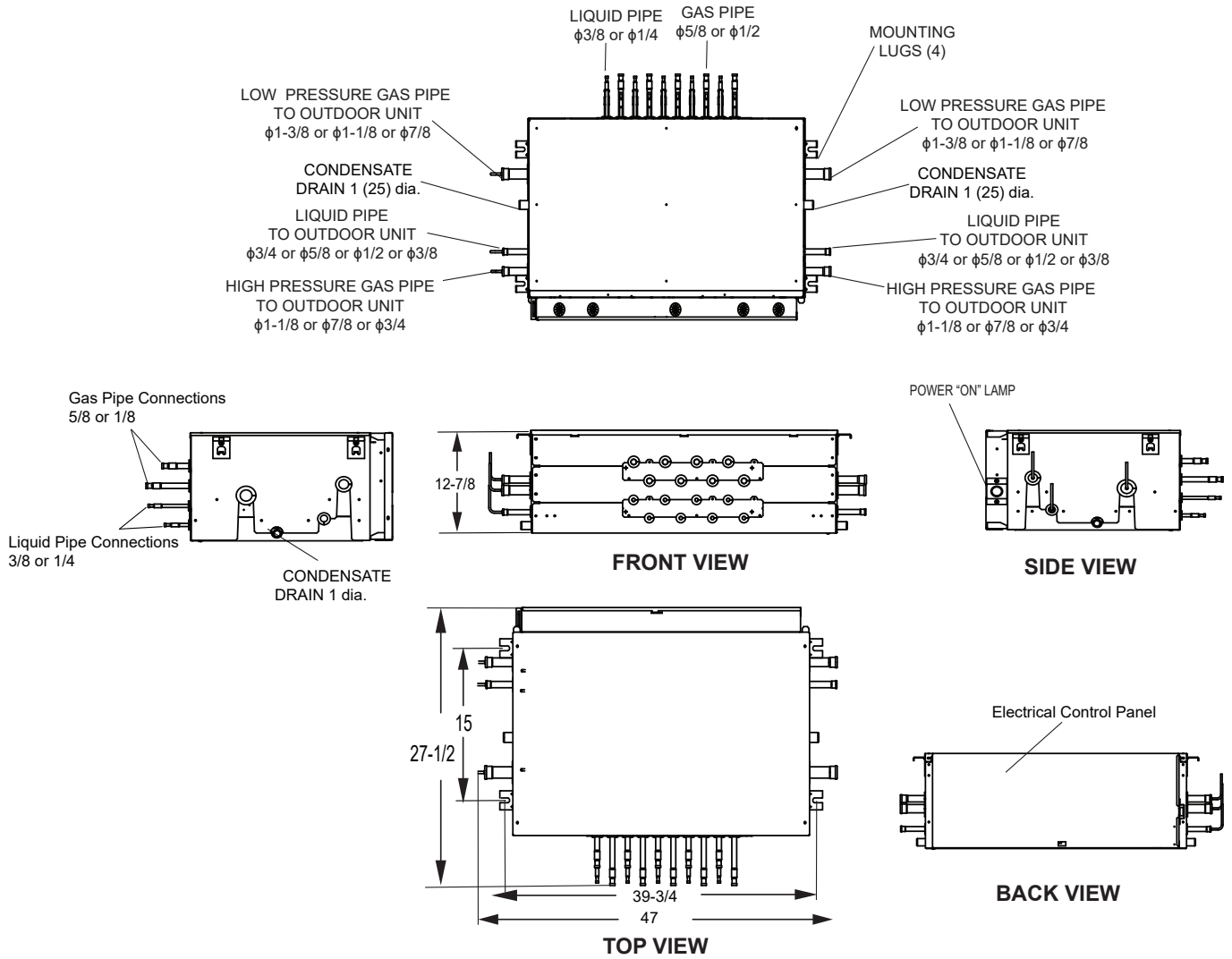
SPECIFICATIONS

| PERFORMANCE | | |
|--|---------------|--------------------------|
| Number of Ports | | 8 |
| Maximum Indoor Units per Port | | 5 |
| Maximum Indoor Box Units | | 40 |
| Maximum Combined Capacity per Port (Btu/h) | | 54,000 |
| Maximum Connected Capacity per box (Btu/h) | | 290,000 |
| ELECTRICAL DATA | | |
| Power Supply (Volts/Hertz/Phase) | | 208-230/60/1 |
| DIMENSIONS | | |
| Unit Dimensions (in) | Width | 47 |
| | Height | 12-7/8 |
| | Depth | 27-1/2 |
| PIPING CONNECTIONS | | |
| Indoor Unit (in) | Liquid Pipe | 1/4 or 3/8 |
| | Gas Pipe | 1/2 or 5/8 |
| Outdoor Unit (in) | Liquid Pipe | 3/4 or 5/8 or 1/2 or 3/8 |
| | H.P. Gas Pipe | 1-1/8 or 7/8 or 3/4 |
| | L.P. Gas Pipe | 1-3/8 or 1-1/8 or 7/8 |
| Condensate Drain Connection (in) | | 1 |
| PCB Quantity | | 2 |
| Net Weight (lb) | | 121 |
| Shipping Weight (lb) | | 196 |



NOTE – Due to Lennox' ongoing commitment to quality, Specifications, Ratings and Dimensions subject to change without notice and without incurring liability. Improper installation, adjustment, alteration, service or maintenance can cause property damage or personal injury. Installation and service must be performed by a qualified installer and servicing agency.

DIMENSIONS - INCHES



NOTE - Horizontal installation only.

NOTE - Field piping connections for the outdoor unit gas and liquid pipes are provided on the right and left side of the mode selection box. Only one side can be used. Piping through the box to another mode selection box is not allowed; use the proper branch joint kit when multiple mode selection boxes are connected.

Mode Selection Boxes

| Model No. | Application |
|-----------|---|
| V8MSBB08 | 8 ports, 5 indoor units maximum per port 40 indoor units maximum for box |

NOTE - Each box has a maximum capacity of 290,000 Btus.