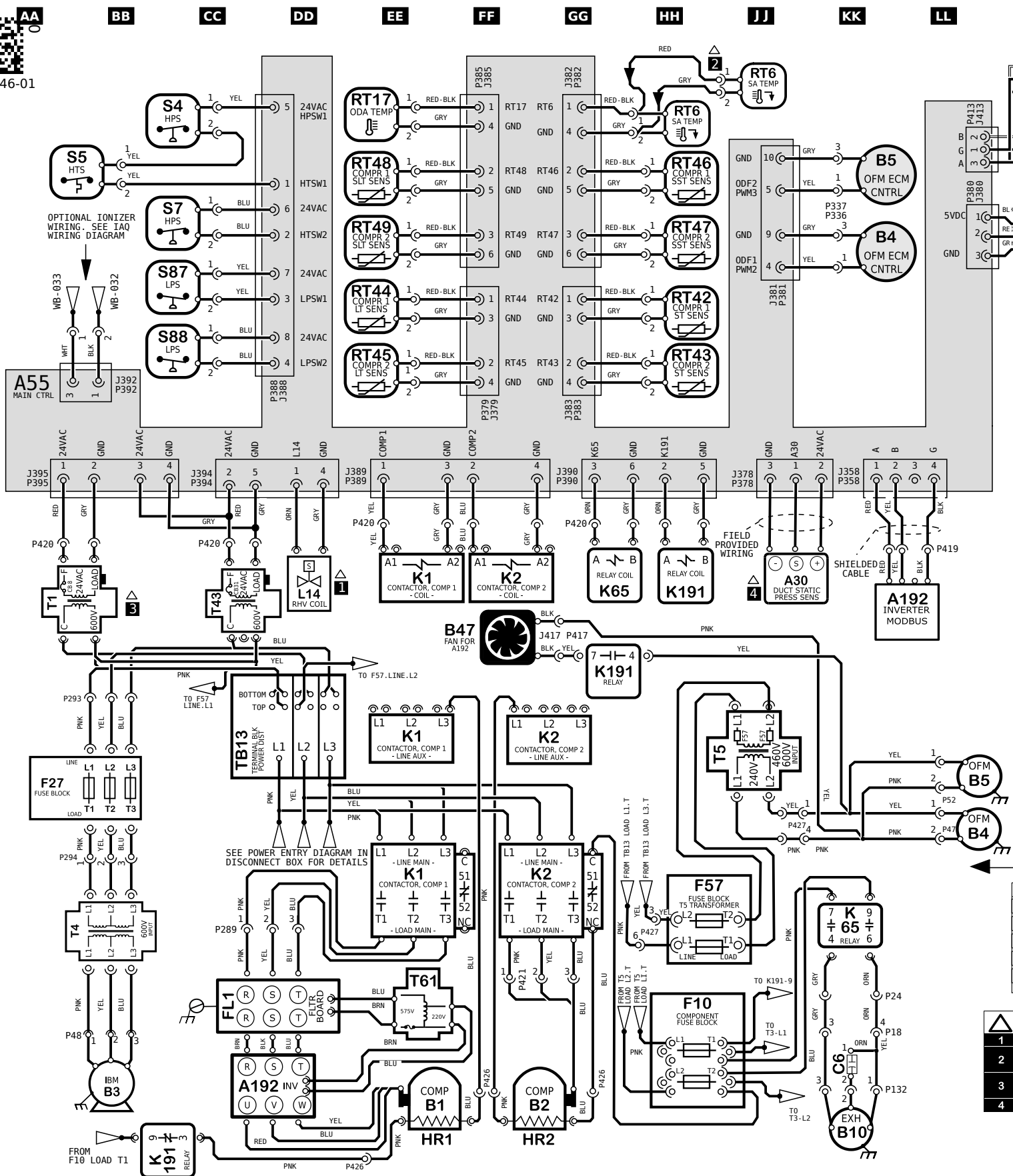
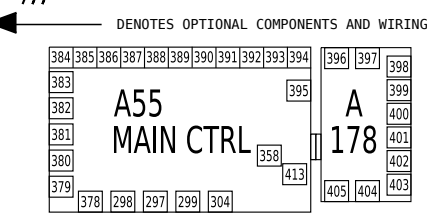


02
03
04
05
06
07
08
09
10



KEY LIST		
LOCATION	COMPONENT DESCRIPTION	
FF05	A30	SENSOR, DUCT STATIC PRESSURE
GG05, BB09	A192	INVERTER, COMPRESSOR 1
DD/EE10	B1, B2	COMPRESSOR 1, 2
AA09, JJ01	B3	MOTOR, BLOWER
GG02, HH07	B4, B5	MOTOR, OUTDOOR FAN 1, 2
GG10	B10	MOTOR, EXHAUST FAN 1
DD05	B47	MOTOR, COOLING FAN FOR A192
GG09	C6	CAPACITOR, EXHAUST FAN 1
FF09	F10	FUSE, COMPONENT
FF08	F57	FUSE, T5 TRANSFORMER
AA07	F27	FUSE, T4 TRANSFORMER
BB/CC09	FL1	FILTER BOARD
DD/EE10	HR1, HR2	HEATER, COMPRESSOR 1, 2
DD/EE06, 07, 08	K1, K2,	CONTACTOR, COMPRESSOR 1, 2
EE05, GG08	K65	RELAY, EXHAUST FAN 1
BB10, FF05, EE06	K191	RELAY, CRANKCASE HEATER 1
CC05	L14	VALVE, SOLENOID, REHEAT COIL 1, 2
BB09	L43	REACTOR INVERTER
HH02	PT6	PRESSURE TRANSDUCER, EBM MOTOR
FF01	RT6	SENSOR, A55 DISCHARGE (MC)
CC01	RT17	SENSOR, OUTSIDE AIR TEMP
FF03	RT42, RT43	SENSOR, SUCTION TEMP., COMP 1, 2
CC03	RT44, RT45	SENSOR, LIQUID TEMP., COMP 1, 2
FF02	RT46, RT47	SENSOR, SAT. SUCT TEMP., COMP 1, 2
CC02	RT48, RT49	SENSOR, SAT. LIQUID TEMP., COMP 1, 2
BB01/02	S4, S7	LIMIT, HI PRESS. SWITCH, COMP 1, 2
AA02	S5	LIMIT, HI TEMP. SWITCH, COMP 1
BB02/03	S87, S88	SWITCH, LOW PRESS., COMP. 1, 2
AA05	T1	TRANSFORMER, CONTROL
AA08	T4	TRANSFORMER, BLOWER MOTOR
FF06	T5	TRANSFORMER, OUTDOOR FAN MOTOR
BB05	T43	TRANSFORMER, CONTACTOR
DD09	T61	TRANSFORMER, INV INTERNAL POWER
BB/CC06	TB13	TERMINAL STRIP, POWER DISTRIBUTION

WARNING
DISCONNECT ALL POWER BEFORE SERVICING.
ELECTRIC SHOCK HAZARD, CAN CAUSE INJURY OR DEATH. UNIT MUST BE GROUNDED IN ACCORDANCE WITH NATIONAL AND LOCAL CODES.
FOR USE WITH COPPER CONDUCTORS ONLY. REFER TO UNIT RATING PLATE FOR MINIMUM CIRCUIT AMPACITY AND MAXIMUM OVERCURRENT PROTECTION SIZE.
IF ANY WIRE IN THIS APPLIANCE IS REPLACED, IT MUST BE REPLACED WITH WIRE OF LIKE SIZE, RATING AND INSULATION THICKNESS.

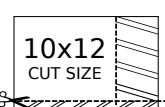
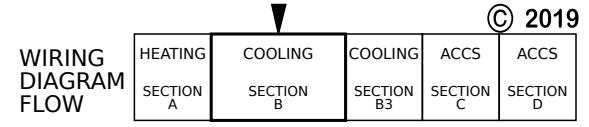


NOTES

- 1 ONLY ON UNITS WITH HUMIDITROL OPTION
- 2 FOR REMOTE LOCATION OF RT6, ADD THE EXTENSION HARNESS
- 3 T1 CONNECTED TO J/P395-1,2 ONLY WITH HUMIDITROL
- 4 USED ON VAV UNITS ONLY

Product: LCM, LGM 092U, 102U, 120U & 150U - J VOLT Cooling Diagram with Higher SCCR

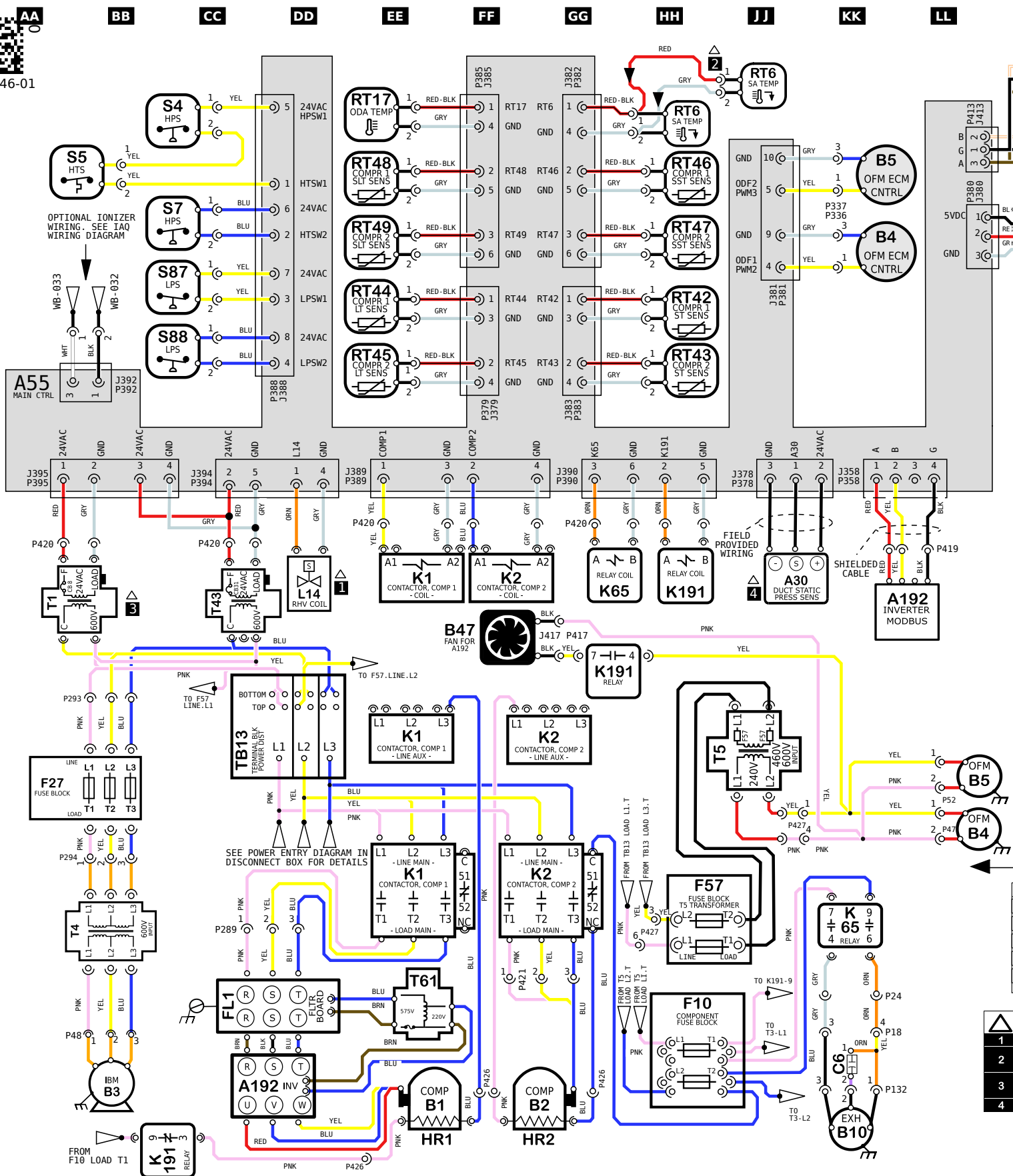
Voltage: 575/3/60 (J)
Supersedes: XXXXXX-XX Form No: 538146-01 Rev: 0



REV	EC NO.	DATE	BY	APVD	REVISION NOTE
000	CN-009874	07-29-2021	RXJ	JDH	ORIGINATED AT PD&R CARROLTON, TX

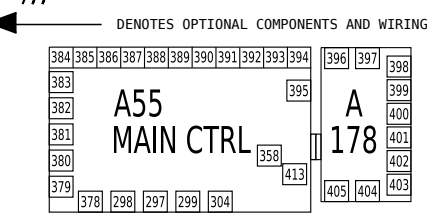
538146-01

02
03
04
05
06
07
08
09
10



KEY LIST	
LOCATION	COMPONENT DESCRIPTION
FF05	A30 SENSOR, DUCT STATIC PRESSURE
GG05, BB09	A192 INVERTER, COMPRESSOR 1
DD/EE10	B1, B2 COMPRESSOR 1, 2
AA09, JJ01	B3 MOTOR, BLOWER
GG02, HH07	B4, B5 MOTOR, OUTDOOR FAN 1, 2
GG10	B10 MOTOR, EXHAUST FAN 1
DD05	B47 MOTOR, COOLING FAN FOR A192
GG09	C6 CAPACITOR, EXHAUST FAN 1
FF09	F10 FUSE, COMPONENT
FF08	F57 FUSE, T5 TRANSFORMER
AA07	F27 FUSE, T4 TRANSFORMER
BB/CC09	FL1 FILTER BOARD
DD/EE10	HR1, HR2 HEATER, COMPRESSOR 1, 2
DD/EE06, 07, 08	K1, K2, CONTACTOR, COMPRESSOR 1, 2
EE05, GG08	K65 RELAY, EXHAUST FAN 1
BB10, FF05, EE06	K191 RELAY, CRANKCASE HEATER 1
CC05	L14 VALVE, SOLENOID, REHEAT COIL 1, 2
BB09	L43 REACTOR INVERTER
HH02	PT6 PRESSURE TRANSDUCER, EBM MOTOR
FF01	RT6 SENSOR, A55 DISCHARGE (MC)
CC01	RT17 SENSOR, OUTSIDE AIR TEMP
FF03	RT42, RT43 SENSOR, SUCTION TEMP., COMP 1, 2
CC03	RT44, RT45 SENSOR, LIQUID TEMP., COMP 1, 2
FF02	RT46, RT47 SENSOR, SAT. SUCT TEMP., COMP 1, 2
CC02	RT48, RT49 SENSOR, SAT. LIQUID TEMP., COMP 1, 2
BB01/02	S4, S7 LIMIT, HI PRESS. SWITCH, COMP 1, 2
AA02	S5 LIMIT, HI TEMP. SWITCH, COMP 1
BB02/03	S87, S88 SWITCH, LOW PRESS., COMP. 1, 2
AA05	T1 TRANSFORMER, CONTROL
AA08	T4 TRANSFORMER, BLOWER MOTOR
FF06	T5 TRANSFORMER, OUTDOOR FAN MOTOR
BB05	T43 TRANSFORMER, CONTACTOR
DD09	T61 TRANSFORMER, INV INTERNAL POWER
BB/CC06	TB13 TERMINAL STRIP, POWER DISTRIBUTION

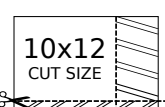
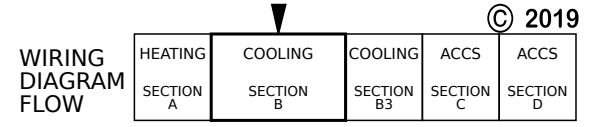
WARNING
DISCONNECT ALL POWER BEFORE SERVICING.
ELECTRIC SHOCK HAZARD, CAN CAUSE INJURY OR DEATH. UNIT MUST BE GROUNDED IN ACCORDANCE WITH NATIONAL AND LOCAL CODES.
FOR USE WITH COPPER CONDUCTORS ONLY. REFER TO UNIT RATING PLATE FOR MINIMUM CIRCUIT AMPACITY AND MAXIMUM OVERCURRENT PROTECTION SIZE.
IF ANY WIRE IN THIS APPLIANCE IS REPLACED, IT MUST BE REPLACED WITH WIRE OF LIKE SIZE, RATING AND INSULATION THICKNESS.



- NOTES**
- 1 ONLY ON UNITS WITH HUMIDITROL OPTION
 - 2 FOR REMOTE LOCATION OF RT6, ADD THE EXTENSION HARNESS
 - 3 T1 CONNECTED TO J/P395-1,2 ONLY WITH HUMIDITROL
 - 4 USED ON VAV UNITS ONLY

Product: LCM, LGM 092U, 102U, 120U & 150U - J VOLT
Cooling Diagram with Higher SCCR

Voltage: 575/3/60 (J)
Supersedes: XXXXXX-XX Form No: 538146-01 Rev: 0



REV	EC NO.	DATE	BY	APVD	REVISION NOTE
000	CN-009874	07-29-2021	RXJ	JDH	ORIGINATED AT PD&R CARROLLTON, TX