

BLOWER SPEED CHART FACTORY CONNECTED SPEED TAPS				
UNIT	COOL	HEAT	FAN	PARK
045E36A	BLACK	BLUE	RED	BROWN, YELLOW
070E36B				
090E48B				
110E60C				

HI ← BLOWER SPEED SELECTION → LO

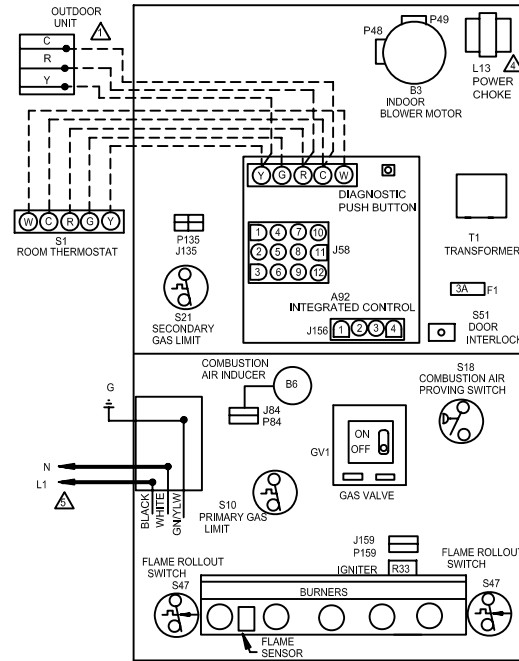
SPEED TAPS: BLACK BROWN BLUE YELLOW RED

JACK/PLUG CHART	
J P48	JACK/PLUG-INDOOR BLOWER-POWER
J P49	JACK/PLUG-INDOOR BLOWER-SPD TAP
J P83	JACK/PLUG-BURNER CONTROL
J P84	JACK/PLUG-COMB AIR INDUCER
J P185	JACK/PLUG-SECONDARY LIMIT
J P186	JACK/PLUG-INDOOR IGNITER
J P189	JACK/PLUG-IGNITION

NOTE- IF ANY WIRE IN THIS APPLIANCE IS REPLACED, IT MUST BE REPLACED WITH WIRE OF LIKE SIZE, RATING, INSULATION THICKNESS AND TERMINATION.

- ⚠ 'R' REQUIRED ON SOME OUTDOOR UNITS
- ⚠ PARK TERMINALS ARE UNPOWERED TERMINALS. ALL UNUSED MOTOR LEADS MUST BE WIRED TO A PARK TERMINAL.
- ⚠ DO NOT USE RED (LOW SPEED) MOTOR LEAD FOR HEATING SPEED ON 045E36A, 070E36B, AND 110E60C UNITS. RESULTING TEMPERATURE RISE WILL BE OUTSIDE OF RISE RANGE.
- ⚠ L13 POWER CHOKE USED ON ½ AND 1 HP ONLY USE COPPER CONDUCTORS ONLY.

THERMOSTAT HEAT ANTICIPATION SETTINGS	
.65 AMP	HONEYWELL VALVE
.50 AMP	WHITE-RODGERS VALVE



BLOWER SPEED CHART FACTORY CONNECTED SPEED TAPS				
UNIT	COOL	HEAT	FAN	PARK
045E36A	BLACK	BLUE	RED	BROWN, YELLOW
070E36B				
090E48B				
110E60C				

HI ← BLOWER SPEED SELECTION → LO

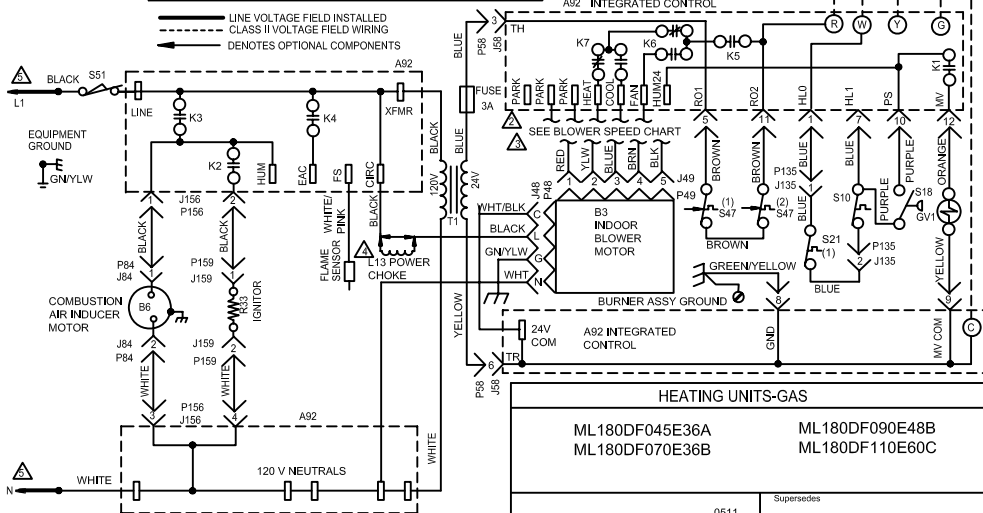
SPEED TAPS: BLACK BROWN BLUE YELLOW RED

JACK/PLUG CHART	
J P48	JACK/PLUG-INDOOR BLOWER-POWER
J P49	JACK/PLUG-INDOOR BLOWER-SPD TAP
J P83	JACK/PLUG-BURNER CONTROL
J P84	JACK/PLUG-COMB AIR INDUCER
J P185	JACK/PLUG-SECONDARY LIMIT
J P186	JACK/PLUG-INDOOR IGNITER
J P189	JACK/PLUG-IGNITION

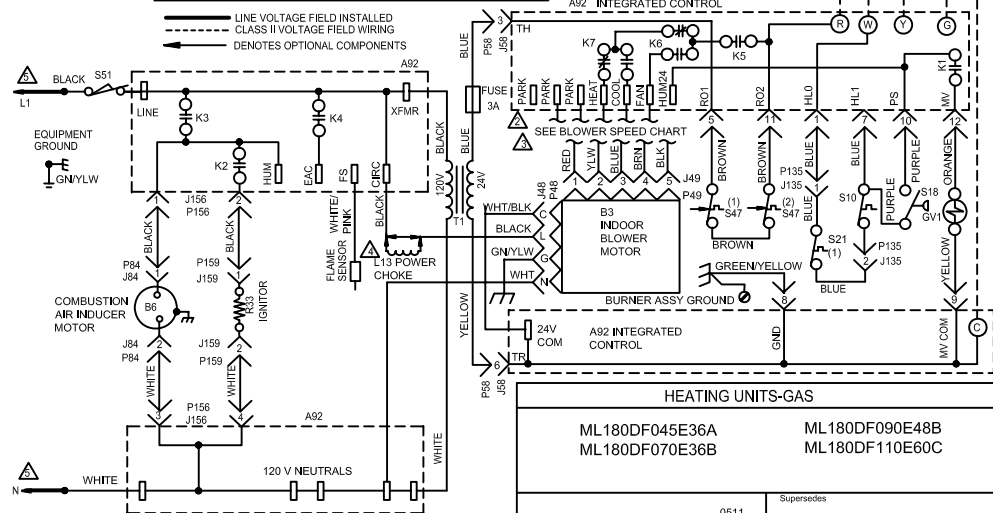
NOTE- IF ANY WIRE IN THIS APPLIANCE IS REPLACED, IT MUST BE REPLACED WITH WIRE OF LIKE SIZE, RATING, INSULATION THICKNESS AND TERMINATION.

- ⚠ 'R' REQUIRED ON SOME OUTDOOR UNITS
- ⚠ PARK TERMINALS ARE UNPOWERED TERMINALS. ALL UNUSED MOTOR LEADS MUST BE WIRED TO A PARK TERMINAL.
- ⚠ DO NOT USE RED (LOW SPEED) MOTOR LEAD FOR HEATING SPEED ON 045E36A, 070E36B, AND 110E60C UNITS. RESULTING TEMPERATURE RISE WILL BE OUTSIDE OF RISE RANGE.
- ⚠ L13 POWER CHOKE USED ON ½ AND 1 HP ONLY USE COPPER CONDUCTORS ONLY.

THERMOSTAT HEAT ANTICIPATION SETTINGS	
.65 AMP	HONEYWELL VALVE
.50 AMP	WHITE-RODGERS VALVE



WARNING- ELECTRIC SHOCK HAZARD, CAN CAUSE INJURY OR DEATH. UNIT MUST BE GROUNDED IN ACCORDANCE WITH NATIONAL AND LOCAL CODES.



WARNING- ELECTRIC SHOCK HAZARD, CAN CAUSE INJURY OR DEATH. UNIT MUST BE GROUNDED IN ACCORDANCE WITH NATIONAL AND LOCAL CODES.