

LENNOX  
VRF



LENNOX® VRF SYSTEMS.  
CONNECTING TECHNOLOGY WITH EXPERTISE.





## LENNOX® MINI-VRF MAKES MULTI-ZONE COMFORT EASY AND EFFICIENT.

Available in 3- to 5-ton configurations, with options to control up to 9 zones, Lennox® Mini-VRF enhances comfort without adding complication. All systems offer energy advantages for a wide range of single-phase applications. Our **true 5-ton system is lighter and more compact than any other system in its class\***, so you can offer customers cost-saving heating and cooling performance that doesn't compromise on space.

### SMALL BUSINESSES

Every office and common area can enjoy its own individual temperature control, and businesses as a whole can realize operational cost savings.

### PREMIUM RESIDENCES

Offering multi-zone temperature control that's efficient and quiet, Lennox Mini-VRF is a commercial product that's also ideally suited to large custom homes.

### ASSISTED-LIVING FACILITIES

Lennox Mini-VRF systems are compatible, interchangeable and adaptable to meet the needs of assisted-living and wellness facilities.

### SERVICE ESTABLISHMENTS

For stores and other point-of-service businesses, Lennox Mini-VRF can eliminate temperature swings, even as heating and cooling demands change throughout the day.

**LENNOX MEANS EFFICIENT, FEATURE-RICH EQUIPMENT.  
LENNOX MINI-VRF IS NO EXCEPTION.**

Mini-VRF outdoor units are designed for efficient performance in even the harshest climates. Indoor units offer multiple installation options, and are engineered to offer higher energy savings. Every component meets or exceeds our exacting standards.



**HIGH EFFICIENCY**  
Inverter technology allows the compressor to adjust its speed based on heating and cooling demand to maximize energy efficiency. Energy consumption can be measured with a third-party pulse meter.

- SEER of up to 19.2
- HSPF of up to 11.4

**COMPACT, LIGHT AND QUIET**  
A low-profile height of only 52-1/4" and width of 35-3/8" make the systems suitable for most architectural design requirements. Indoor units have a specially engineered fan blade design that optimizes airflow and keeps sound levels as low as 23 dBA. Outdoor sound levels can be as low as 41 dBA.

**CUSTOMIZABLE COMFORT**  
Lennox Mini-VRF can be easily integrated with the largest programmable touchscreen controller in the industry. The 7" screen with full-color display makes it easy to set temperatures for up to 9 different zones, create customized heating and cooling schedules and troubleshoot.

**MINI-VRF SYSTEMS PERFORMANCE SPECIFICATIONS**

NOM. TON	MODEL	CAPACITY (BTU/H)	COOLING DATA				HEATING DATA			PHYSICAL DATA		Operation Range
			SEER		EER		CAPACITY (BTU/H)	HSPF		DIMENSIONS H X W X L (IN.)	NET WT. (LBS.)	HEATING/COOLING
			Ducted	Non-Ducted	Ducted	Non-Ducted		Ducted	Non-Ducted			
3	VPB036H4M-3P	36,000	17.8	19.2	11.9	12.1	40,000	10.4	11.4	52-1/4 x 35-3/8 x 13-1/4	220	-4°F to 80°F (HEATING)
4	VPB048H4M-3P	48,000	17.8	19	10.4	11	52,500	10.5	11			5°F to 118°F (COOLING)
5	VPB060H4M-3P	60,000	17.6	18.8	9.3	9.5	66,000	10.5	10.6			



## INDOOR UNITS

Lennox® Mini-VRF systems include a wide selection of indoor units, each offering a different form factor to accommodate different building designs and construction needs. Every indoor unit contains smart features to increase efficiency and functionality:

### **AUTO RESTART**

Restores operation after power failure.

### **AUTO ADDRESSING**

Mini-VRF systems have the optional ability to automatically assign indoor unit addresses upon startup.

### **DRY MODE**

Indoor units operate with greater humidity control and comfort.

### **WASHABLE FILTER**

Helps preserve indoor air quality while reducing waste.

### **BUILT-IN DRY CONTACT RELAYS**

For controlling 3rd party devices, such as auxillary heat.

### **PRE-HEAT FUNCTION**

Prevents air from circulating during heating mode until the indoor coil has sufficiently warmed.

### **REMOTE ON/OFF**

Provides convenience and energy savings.

### **ERROR STATUS**

Alerts the user if a fault is detected or maintenance is needed.





**VWMB  
WALL MOUNT**

**FLEXIBLE  
INSTALLATION**

Refrigerant piping can be routed to the left, right or rear

**AUTO-SWING LOUVER**

Automatically redirects air based on mode selected

**QUIET OPERATION**

Noise levels as low as 29 dB



**V22B  
COMPACT 360°  
CASSETTE**

**360° AIR OUTLET**

Provides uniform temperature distribution

**COMPACT CASING**

Fits directly into a lay-in ceiling grid, while reducing installation space requirements above the ceiling

**INTEGRAL  
CONDENSATE PUMP**

Removes moisture quickly and conveniently



**V33B 360° CASSETTE**

**360° AIR OUTLET**

Provides uniform temperature distribution

**OUTSIDE AIR  
CONNECTION**

Allows ventilation air to be induced directly into the unit

**INTEGRAL  
CONDENSATE PUMP**

Removes moisture quickly and conveniently

**ECM MOTOR**

For maximum energy efficiency



**VOWA ONE WAY  
CASSETTE**

**INTEGRAL  
CONDENSATE PUMP**

Removes moisture quickly and conveniently

**ECM MOTOR**

For maximum energy efficiency

**QUIET OPERATION**

Noise levels as low as 29 db



**VCFB  
CEILING AND  
FLOOR MOUNT**

**FLEXIBLE  
INSTALLATION**

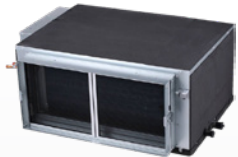
Installs either vertically or horizontally

**VERTICAL AND  
HORIZONTAL  
AUTO SWING**

Ensures better airflow distribution

**COMPACT  
INSTALLATION**

Less than 8.5" (216mm) in height



**VHIB  
HIGH-STATIC  
DUCTED**

**HIGH STATIC PRESSURE**

Support external static pressure up to 1"

**LOW PROFILE HEIGHT**

For space-saving applications

**OPTIONAL  
CONDENSATE PUMP**

Removes moisture quickly and conveniently



**VMDB  
MEDIUM-STATIC  
DUCTED**

**COMPACT INSTALLATION**

A height of only 8.25" (210mm) makes this unit ideal when space above the ceiling is limited

**INTEGRAL  
CONDENSATE PUMP**

Removes moisture quickly and conveniently

**ECM MOTOR**

For maximum energy efficiency



**VVCB  
VERTICAL AIR  
HANDLING UNIT**

**ECM MOTOR**

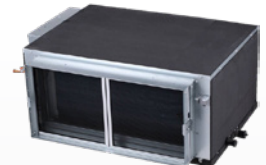
For maximum energy efficiency

**MULTI-POSITION**

Install vertically or in horizontal-right or horizontal-left orientations for maximum flexibility

**OPTIONAL ELECTRIC HEAT**

Up to 20kW



**VOSB OUTSIDE  
AIR DUCT**

**DISCHARGE TEMPERATURE  
CONTROL**

For maximum comfort control

**BUILT IN DRY CONTACT  
RELAYS**

Supports 3rd party devices such as pre-heat, dampers, and CO2 sensors

**HIGH STATIC PRESSURE**

Support external static pressure up to 1"

# CONTROLS

Lennox® Mini-VRF equipment is flexible in its comfort control, and its applications. With multiple control options and accessories available, it can be customized to create an ideal environment in every room, in any season. Lennox VRF Controls provide powerful control of Lennox VRF systems with a sleek, intuitive interface.



## VRF WI-FI CONTROLLER

The new Lennox VRF Wi-Fi Controller is designed to meet your needs for performance, convenience, and flexibility. It is compatible with Lennox VRF and Mini-VRF units making it ideal for either light-commercial or residential applications. The Controller works with the Lennox VRF Application, enabling remote command and control.

- 4" color IPS touch screen
- Wi-Fi connectivity
- Remote operation via mobile app
- Schedule by time and days of the week
- Lockable UI
- Operation mode: cool/heat/auto/fan



## LVM CENTRALIZED CONTROLLER

VOCTRL15P-1

- Centralized monitoring and control for up to 320 systems, or a maximum of 960 outdoor units and 2,560 indoor units.
- Available in 15-inch touchscreen
- Standard with web access
- Energy monitoring to see the exact price by kilowatt-hour (kWh) by indoor unit/zone or group



## PROGRAMMABLE WIRED CONTROLLER

VOSTAT51P

- Built-in occupancy sensor with options for setback
- Built-in humidity sensor with humidity control options for maximum comfort control
- Auto-detects indoor unit model and capacity
- Daily, 5+2, 5+1+1, 7-day, and customer holiday programming options



## SIMPLE WIRED CONTROLLER

VOSTAT54P

- Easy-to-read backlit display for setpoint and room temperature
- Control up to 16 indoor units from a single controller
- View sensor readings, EXV position, and system codes



## WIRELESS REMOTE CONTROLLER

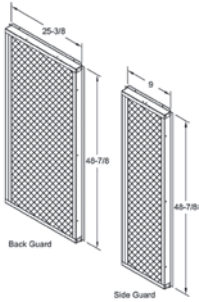
VOSTAT52P

- Control setpoint, fan speed, mode, and louver swing
- Configurable for fahrenheit or celsius
- Easy-to-read backlit LCD display

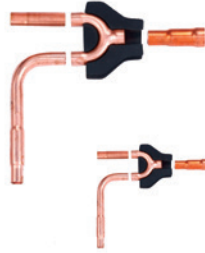
BACnet is a registered trademark of ASHRAE. LonWorks is a registered trademark of Echelon Corporation.

## SYSTEM ACCESSORIES

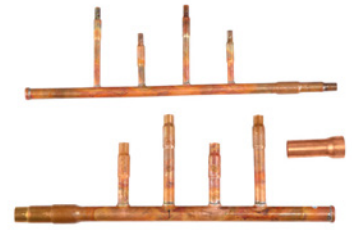
Lennox Mini-VRF outdoor and indoor units are available with a variety of optional accessories that offer added application flexibility, along with greater efficiency and functionality.



**MINI-VRF  
HAIL GUARDS**  
V8GARD11S11



**Y-BRANCH UNITS  
(INDOOR AND OUTDOOR)**  
V80DBP\*\*/V8IDBP\*\*



**HEADER KIT**  
V8HDRK\*\*

## TOOLS AND RESOURCES

When you select Lennox Mini-VRF, you're choosing technology backed by expertise. Lennox HVAC professionals understand the challenges faced by engineers and contractors in designing and specifying a heating and cooling system, which is why we offer resources to help with every job.

### LENNOX VRF & MINI-SPLITS MOBILE APPLICATION

Available on iTunes and Google Play, the Lennox VRF & Mini-Splits app puts invaluable resources right at your fingertips to simplify installation and operation:

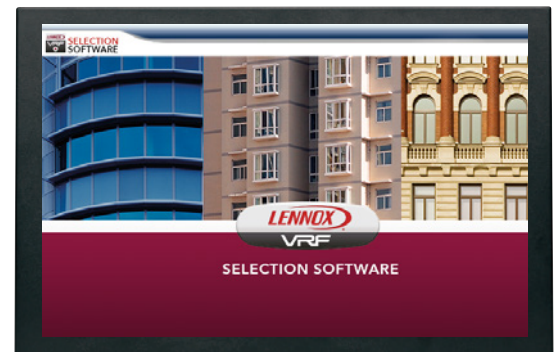
- Help videos
- Document library
- Refrigerant charge calculator
- Error code lookup
- Quick reference guide
- Pipe specifications and limitations



### LENNOX VRF SELECTION SOFTWARE

Simple drag-and-drop functionality makes it possible to view different outdoor and indoor equipment in CAD-based building plans prior to ordering and installation:

- Built-in limitations to ensure selections are consistent with piping rules, connection ratios and other application considerations
- Ability to export selections to Microsoft Word or Excel formats



# SOLUTIONS FOR CUSTOMIZED COMFORT

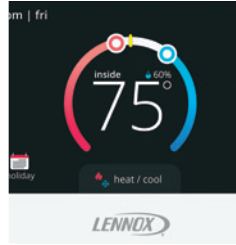
Don't just choose a Lennox product—choose a Lennox® Commercial Comfort System.

These complete packages of HVAC solutions provide tools to create a healthy and comfortable environment.



## PACKAGED UNITS

- Emergence® Rooftop Units
- Landmark® Rooftop Units
- Raider® Rooftop Units
- Accessories



## COMMERCIAL CONTROLS

- Systems Integration Solutions
- Commercial Thermostats



## VRF

- Outdoor Units
- Indoor Units
- Controls
- Accessories



## MINI-SPLIT SYSTEMS

- Heat Pump Mini-Splits
- Low Ambient Heat Pump Mini-Splits
- Air Conditioning Mini-Splits
- Indoor Units
- Controls



## HEATING

- Unit Heaters
- Duct Furnaces
- Furnaces



## INDOOR AIR QUALITY

- Dedicated Outdoor Air System™
- Humiditrol® Dehumidification System
- Demand Control Ventilation
- Air Filters
- UVC Lamps



## SPLIT SYSTEMS

- Elite® Series Large and Small Split Systems
- T-Class™ Air Conditioners/Heat Pumps
- Air Handlers
- Indoor Coils

