

PACKAGED UNIT KITS AND ACCESSORIES

507315-03
3/2023
Replaces 507315-02

BLOWER ASSEMBLY REPLACEMENT KIT

INSTALLATION INSTRUCTIONS FOR BLOWER ASSEMBLY REPLACEMENT KIT USED WITH LG/LC/LH/LD 078-150 UNITS

Shipping and Packing List

Package 1 of 1 contains:

- 1- Blower assembly

⚠ WARNING

Improper installation, adjustment, alteration, service or maintenance can cause property damage, personal injury or loss of life. Installation and service must be performed by a licensed professional HVAC installer or equivalent, service agency, or the gas supplier

Application

The blower assembly replacement kit is used on LG/LC/LH/LD 078-150 units. See table 1 or 2.

Installation

- 1- Disconnect electrical power to unit. Wait five minutes before continuing service procedures to avoid electrical shock. This will allow internal capacitors time to fully discharge.
- 2- Open access panels as shown in figure 1.
- 3- Disconnect B3 Modbus connection and PT6 connection in the blower section. See figure 2.
- 4- Disconnect P48 in the controls area. See figure 4.
- 5- Cut wire ties where necessary and pull P48 wiring harness from control area into blower section.

⚠ CAUTION

As with any mechanical equipment, contact with sharp sheet metal edges can result in personal injury. Take care while handling this equipment and wear gloves and protective clothing.

TABLE 1
LGM/LCM 092-150U

Cat. No.	Assembly No.	Voltage
22A41	612793-07	Y
22A42	612793-08	G, J
22A43*	612793-09	Y
22A44*	612793-10	G, J

*Corrosion protection

TABLE 2
LGT/LCT/LHT/LDT 078-150H

Cat. No.	Assembly No.	Voltage
24G12	612793-13	Y
24G13	612793-14	G
24G14	612793-15	J
24G22*	612793-16	Y
24G23*	612793-17	G
24G24*	612793-18	J
24G25	612793-19	Y
24G26	612793-20	G
24G27	612793-21	J
24G28*	612793-22	Y
24G29*	612793-23	G
24G30*	612793-24	J

*Corrosion protection

⚠ WARNING

To prevent serious injury or death:

- 1- Lock-out/tag-out before performing maintenance.
- 2- If system power is required (e.g., smoke detector maintenance), disable power to blower, remove fan belt where applicable, and ensure all controllers and thermostats are set to the "OFF" position before performing maintenance.
- 3- Always keep hands, hair, clothing, jewelry, tools, etc., away from moving parts.

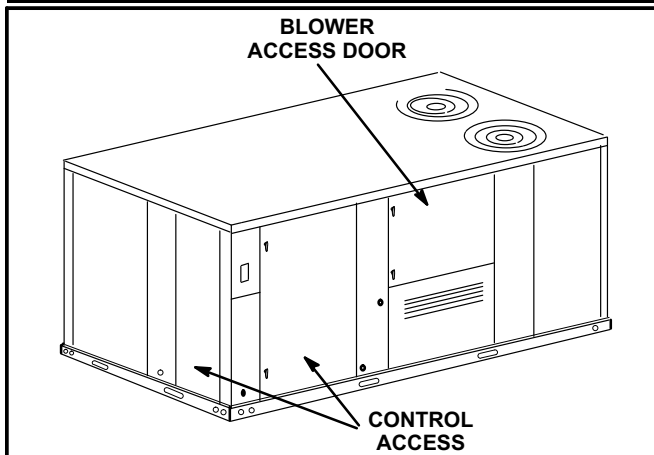


FIGURE 1

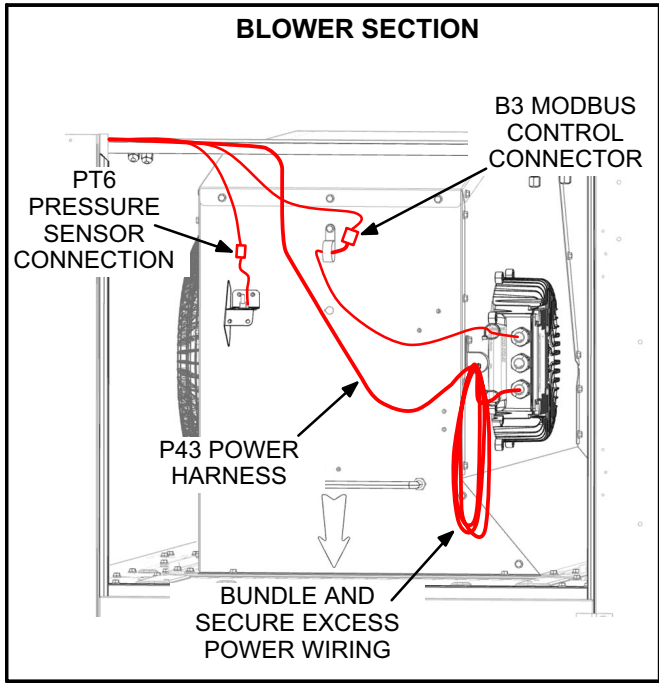


FIGURE 2

- 6- Remove four screws securing blower assembly to unit. See figure 5.
- 7- If unit was equipped with a blower proving switch, remove switch from existing blower housing. Attach the proving switch to replacement blower assembly in the same manner it was removed.
- 8- Disconnect the pressure tubing from PT6 pressure sensor. See figure 3. Remove two screws and remove sensor/bracket assembly (note the orientation) from existing blower housing. Install the sensor/bracket onto the replacement blower assembly. Reattach the tubing in the same manner they were removed.

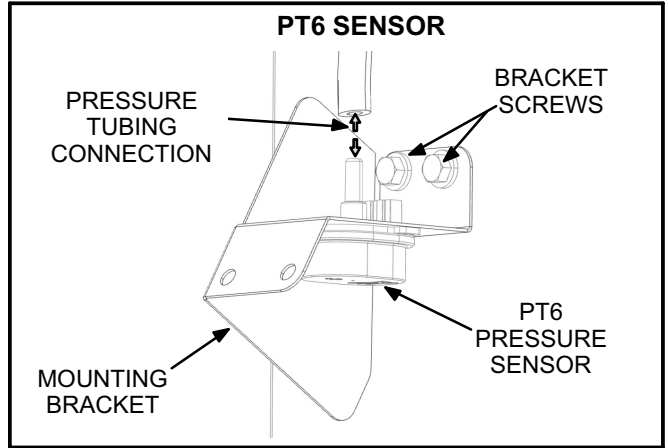


FIGURE 3

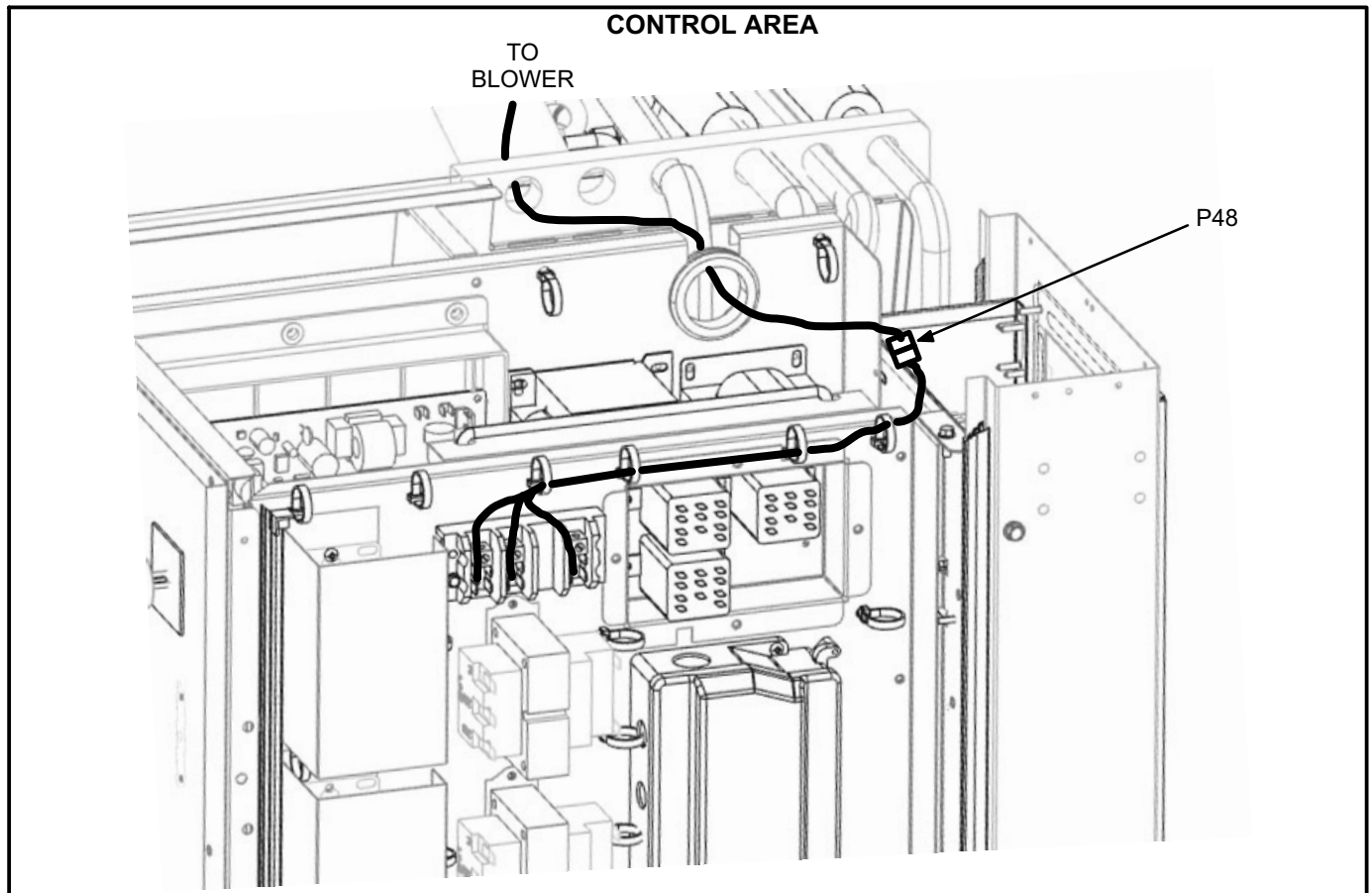


FIGURE 4

- 9- Use the handle on the blower assembly to slide the assembly out of unit.
- 10- Install replacement blower assembly flanges into rails on the blower deck in the same manner it was removed. Secure into place using four screws shown in figure 5.
- 11- Uncoil P48 wiring harness secured to replacement blower housing.

- 12- Route P48 end of harness through unit to control area in the same manner it was removed.
- 13- Connect P48, B3 Modbus, and PT6 connections as shown in figures 2 and 4.
- 14- Bundle harnesses and use wire ties to secure kit harnesses to unit harnesses in the same manner they were removed.

