

Job: _____
Location: _____
Schedule No.: _____
System Designation: _____

Engineer: _____
Architect: _____
Location: _____
Date: _____
For: Reference Approval Review Construction

Mode Selection Box

FEATURES

Allows simultaneous heating and cooling of multiple zones on VRF Heat Recovery outdoor units.

- Terminal strip connections for indoor units
- Ability to connect up to 41 indoor units

WARRANTY

- 10-year limited warranty.*See warranty for details.

SPECIFICATIONS

PERFORMANCE

Number of Ports	10
Maximum Indoor Units per Port	5
Maximum Indoor Box Units	41
Maximum Combined Capacity per Port (Btu/h)	54,000
Maximum Connected Capacity per box (Btu/h)	290,000

ELECTRICAL DATA

Power Supply (Volts/Hertz/Phase)	208-230/60/1
----------------------------------	--------------

DIMENSIONS

Unit Dimensions (in)	Width	47
	Height	12-7/8
	Depth	27-1/2

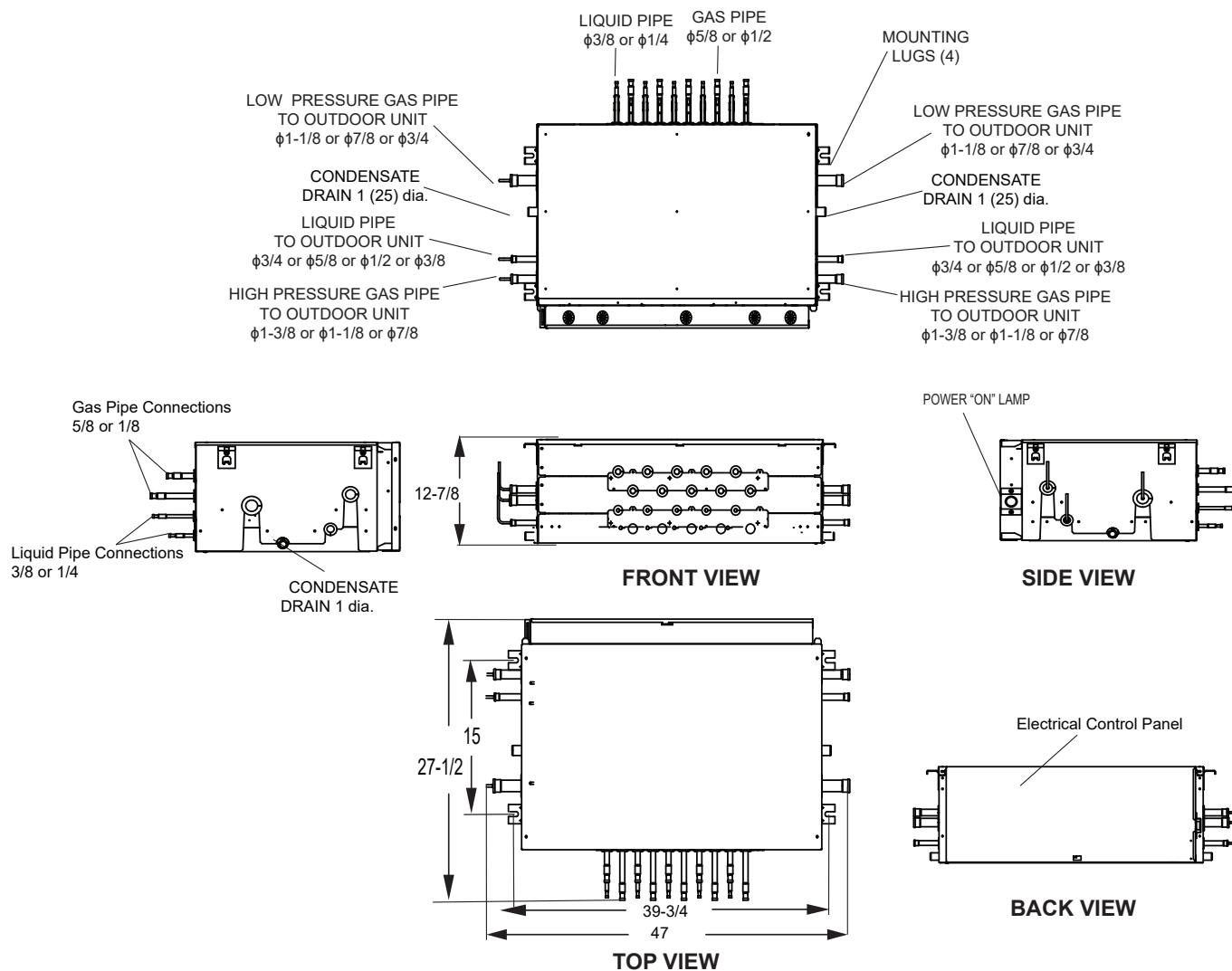
PIPING CONNECTIONS

Indoor Unit (in)	Liquid Pipe	1/4 or 3/8
	Gas Pipe	1/2 or 5/8
Outdoor Unit (in)	Liquid Pipe	3/4 or 5/8 or 1/2 or 3/8
	H.P. Gas Pipe	1-1/8 or 7/8 or 3/4
	L.P. Gas Pipe	1-3/8 or 1-1/8 or 7/8
Condensate Drain Connection (in)		1
PCB Quantity		3
Shipping Weight (lb)		207
Net Weight (lb)		130



NOTE – Due to Lennox' ongoing commitment to quality, Specifications, Ratings and Dimensions subject to change without notice and without incurring liability. Improper installation, adjustment, alteration, service or maintenance can cause property damage or personal injury. Installation and service must be performed by a qualified installer and servicing agency.

DIMENSIONS - INCHES (MM)



NOTE - Horizontal installation only.

NOTE - Field piping connections for the outdoor unit gas and liquid pipes are provided on the right and left side of the mode selection box. Only one side can be used. Piping through the box to another mode selection box is not allowed; use the proper branch joint kit when multiple mode selection boxes are connected.

Mode Selection Boxes

Model No.	Application
V8MSBB10	10 ports, 5 indoor units maximum per port 41 indoor units maximum for box

NOTE - Each box has a maximum capacity of 290,000 Btus.