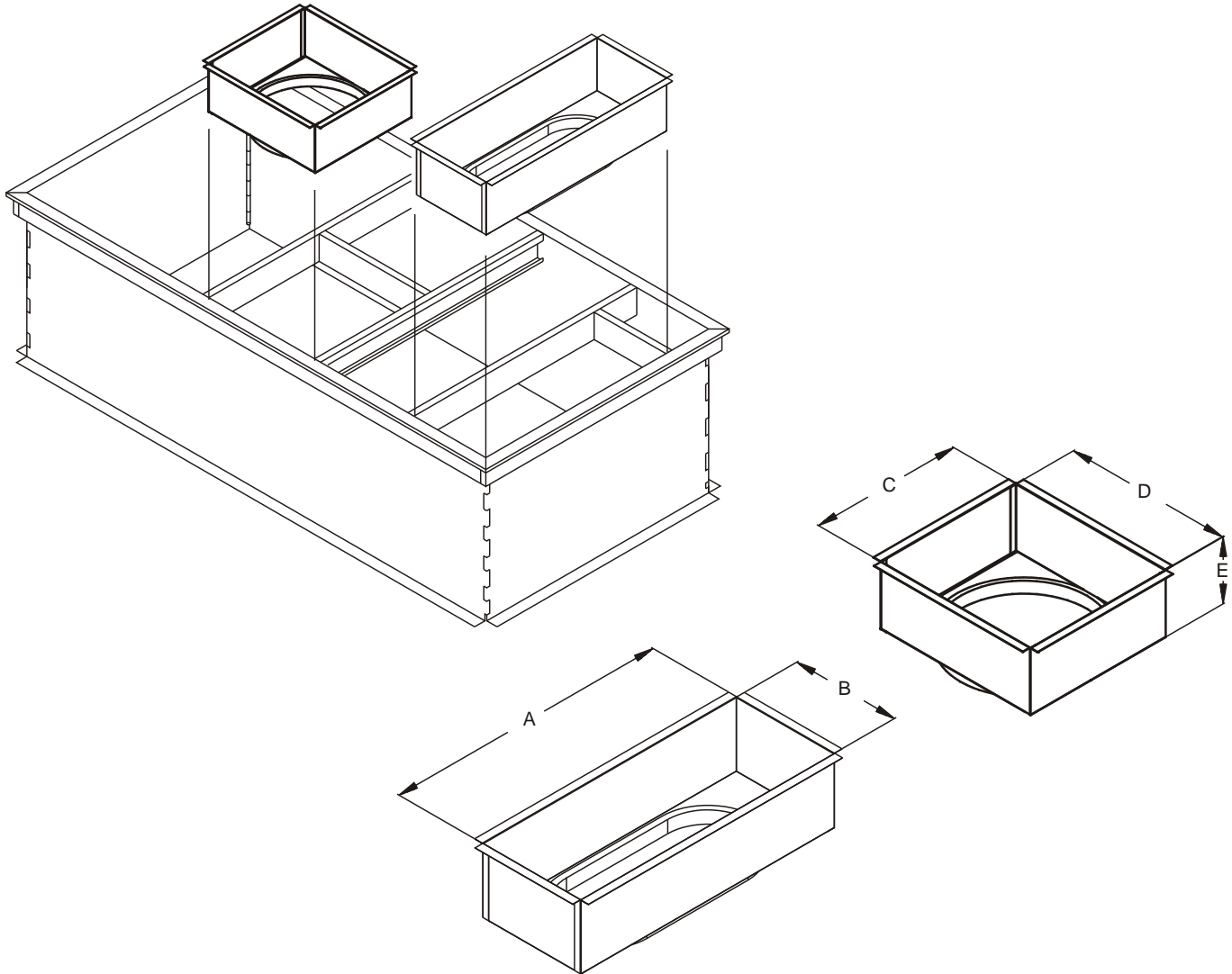




INSTALLATION INSTRUCTIONS FOR
TGA/TCA/THA 024-072
KGA/KCA/KHA 024-090 / LGH/LCH 036-072
17W53 / 17W54
CONCENTRIC CURB TRANSITION

The Concentric Curb Transition is designed to drop into the curb and convert the square duct unit connections to round duct. For use with:

CAT#	A	B	C	D	E	DUCT SIZE
17W53	31 ½	12	20 ½	20 ½	8	18"
17W54	31 ½	12	20 ½	20 ½	8	20"



Step 1:

Check for correct part number and dimensions listed above:

Step 2:

Attach duct to transition duct connections.

Step 3:

Install transition in supply/return opening in roof curb.

Step 4:

Place ¾" x 1¼" gasket (included with the curb only) as instructed in roof curb installation sheet.