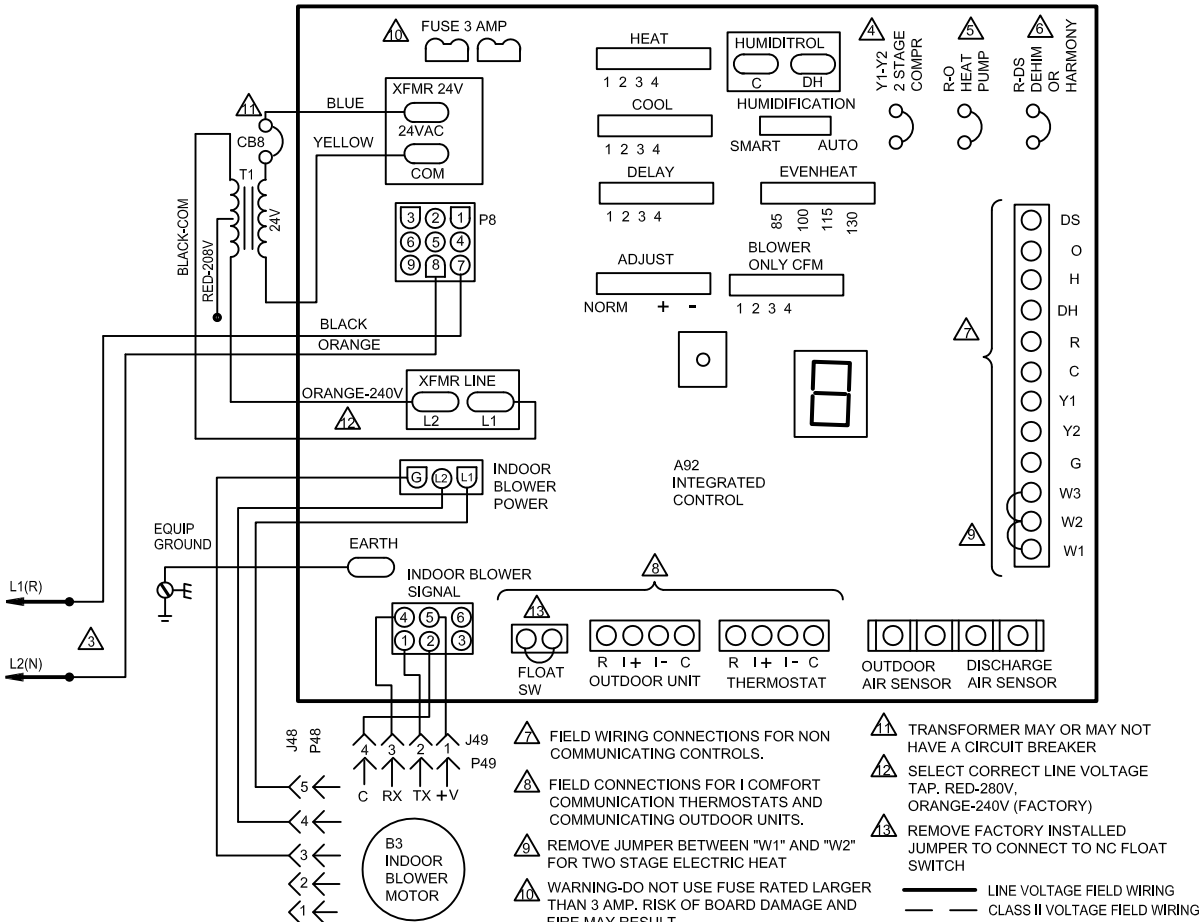


KEY	DESCRIPTION	COMPONENT
A92	CONTROL-INTEGRATED	
B3	MOTOR-BLOWER	
J48	JACK-MOTOR-VARIABLE SPEED	
J49	JACK-MOTOR-VARIABLE SPEED	
P8	PLUG-ELECTRIC HEAT	
P48	PLUG-MOTOR-VARIABLE SPEED	
P49	PLUG-MOTOR-VARIABLE SPEED	
T1	TRANSFORMER-CONTROL	

RECOMMENDED BLOWER SPEED TAP SELECTION

MODEL	BLOWER COIL	SPEED TAP SELECTION			
		COOL	HEAT	HEAT	HEAT
		CONDENS- ING UNIT	PUMP	CONDENS- ING UNIT WITH ELECTRIC HEAT ONLY	PUMP WITH ELECTRIC HEAT
CBX40UHV/ CBX32MV	-018, -024 -030, -036	PIN #3	PIN #3	PIN #4	PIN #4
	-042	PIN #3	PIN #3	PIN #3	PIN #3
	-048	PIN #2	PIN #2	PIN #1	PIN #1
	-060	PIN #3	PIN #3	PIN #1	PIN #1
	-068	PIN #3	PIN #3	PIN #4	PIN #4
CBA38MV	-018	PIN #2	PIN #2	4 MINUS	4 MINUS
	-024				
	-030	PIN #3	PIN #3	PIN #3	PIN #3
	-036				
	-042	PIN #3	PIN #3	PIN #3	PIN #3
	-048	PIN #2	PIN #2	PIN #2	PIN #2
	-060	PIN #3	PIN #3	PIN #3	PIN #3



- ⚠ REFER TO FACTORY BLOWER SPEED TAP SELECTION CHART ON UNIT FOR BLOWER SPEED INFORMATION.
- ⚠ NEC/CEC CLASS 2 3VA
- ⚠ USE COPPER CONDUCTORS ONLY. REFER TO UNIT RATING PLATE FOR MINIMUM CIRCUIT AMPACITY AND MAXIMUM OVERCURRENT PROTECTION SIZE
- ⚠ CLIP LINK "Y1" TO "Y2" FOR TWO STAGE UNIT
- ⚠ CLIP LINK "R" TO "O" WHEN HEAT PUMP IS USED
- ⚠ CLIP LINK BETWEEN "R" AND "DS" WHEN DEHUMIDIFICATION CONTROL IS USED

LENNOX COILS-BLOWER COIL UNITS

CBX32MV, CBX40UHV, CBA38MV

COIL SECTION-

Supersedes

0819
Form No.
538057-01