

538190-01  
01

02

03

04

05

06

07

08

09

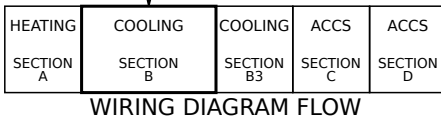
10

Model: LGT, LCT 036H - 072H G VOLT  
 COOLING - EBM BLOWER WITHOUT HIGHER SCCR  
 Voltage: 460V/3~60Hz (G)  
 Supersedes: N/A Form No: 538190-01 Rev: 0

LOCATION	COMPONENT DESCRIPTION
AA01,02,03	<b>A55</b> CONTROL BOARD, MAIN
HH07	<b>AM1, AM2</b> AIR MONITOR, SUPPLY/RETURN, IAQ-TVOC
BB07	<b>B1</b> COMPRESSOR 1
HH01,EE06	<b>B3</b> MOTOR, BLOWER
GG02,DD07	<b>B4</b> MOTOR, OUTDOOR FAN 1
HH06	<b>B10</b> MOTOR, EXHAUST FAN 1
HH06	<b>C6</b> CAPACITOR, EXHAUST FAN 1
CC05	<b>F57</b> FUSE, T5 TRANSFORMER PRIMARY
BB07	<b>HR1</b> HEATER, COMPRESSOR 1
BB04,05,06	<b>K1</b> CONTACTOR, COMPRESSOR 1
HH04,05	<b>K65</b> RELAY, EXHAUST FAN 1
BB04,06	<b>K191</b> RELAY, CRANKCASE HEATER 1
FF04	<b>L14</b> VALVE, SOLENOID, REHEAT COIL 1
CC04	<b>L34</b> VALVE, SOLENOID, 2 STG COMPRESSOR
EE01	<b>RT6</b> SENSOR, A55 DISCHARGE (IIMC)
CC01	<b>RT17</b> SENSOR, OUTSIDE AIR TEMP
EE02	<b>RT46</b> SENSOR, SAT. SUCT. TEMP, COMP 1
CC02	<b>RT48</b> SENSOR, SAT. LIQUID TEMP, COMP 1
AA01	<b>S4</b> LIMIT, HI PRESS. SWITCH, COMP 1
AA01	<b>S87</b> SWITCH, LOW PRESS., COMP 1
DD04	<b>T1</b> TRANSFORMER, CONTROL
DD05	<b>T5</b> TRANSFORMER, MOTOR
EE04	<b>T43</b> TRANSFORMER, REHEAT

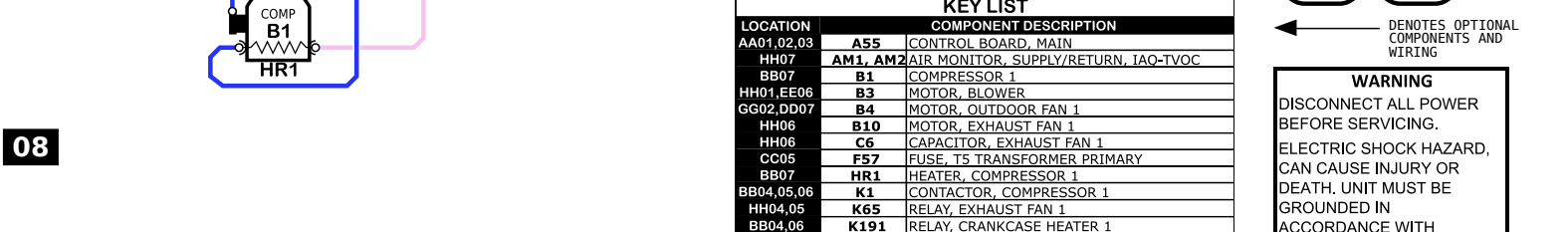
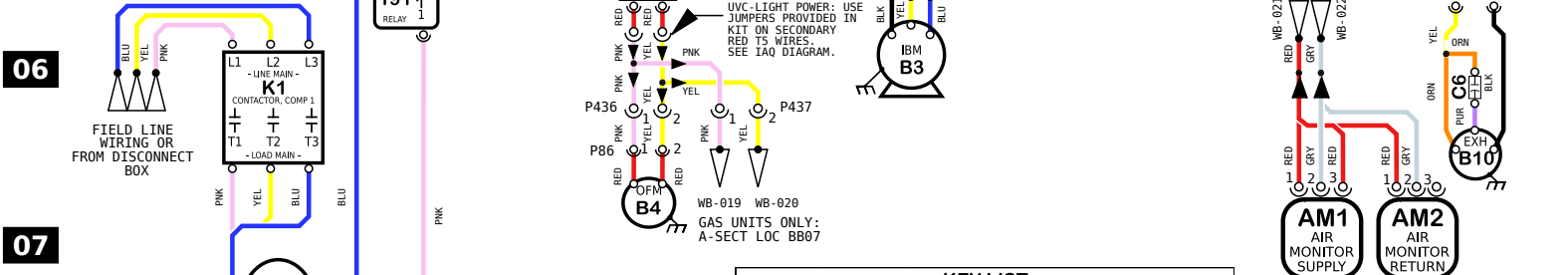
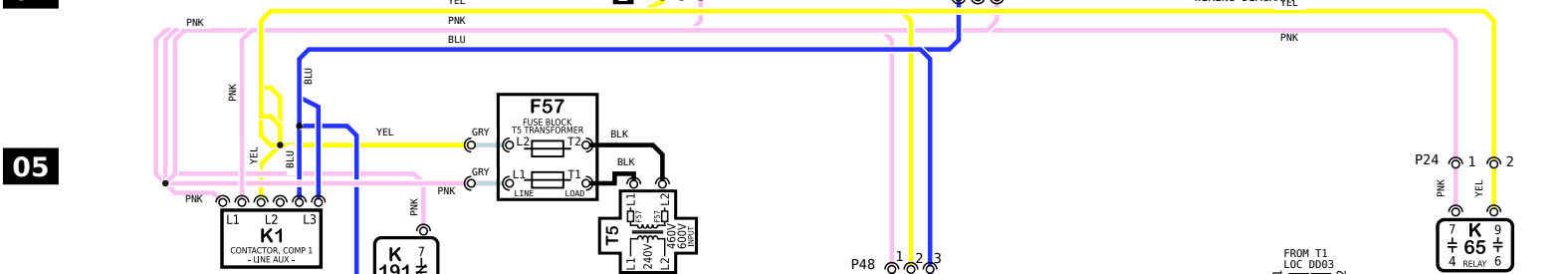
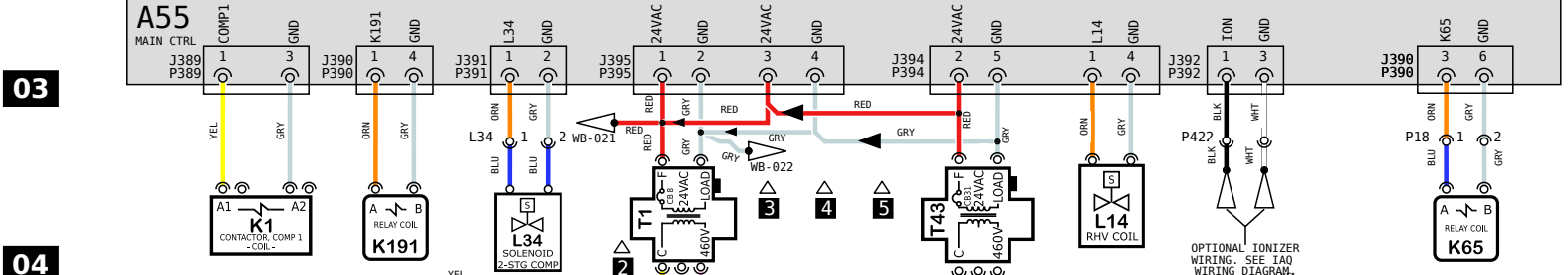
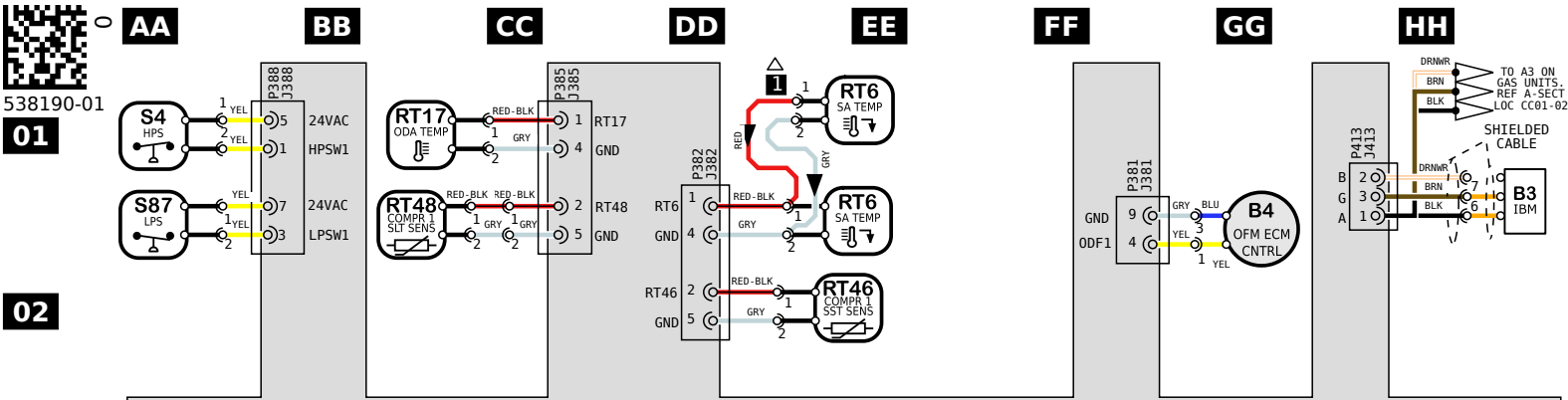
NOTES
1 RT6 REMOTE MOUNT WIRING
2 MOVE WIRES FROM 240 TO 208 TAP ON TRANSFORMER FOR 208 VOLT APPLICATIONS
3 W/O HUMIDITROL, W/O PHASE DETECTION - T1 CONNECTED TO J/P395-1,2,3,4
4 PHASE DETECTION - T1 CONNECTED TO J/P395-1,2. T43 CONNECTED TO J/P395-3,4
5 HUMIDITROL - T1 CONNECTED TO J/P395-1,2. T43 CONNECTED TO J/P395-3,4 & J/P394-2,5. L14 CONNECTED TO J/P394-1,4

**WARNING**  
 DISCONNECT ALL POWER BEFORE SERVICING.  
 ELECTRIC SHOCK HAZARD, CAN CAUSE INJURY OR DEATH. UNIT MUST BE GROUNDED IN ACCORDANCE WITH NATIONAL AND LOCAL CODES.  
 FOR USE WITH COPPER CONDUCTORS ONLY. REFER TO UNIT RATING PLATE FOR MINIMUM CIRCUIT AMPACITY AND MAXIMUM OVERCURRENT PROTECTION SIZE.  
 IF ANY WIRE IN THIS APPLIANCE IS REPLACED, IT MUST BE REPLACED WITH WIRE OF LIKE SIZE, RATING AND INSULATION THICKNESS.



8.5 X 10 CUT SIZE

REV	EC NO.	DATE	BY	APVD	REVISION NOTE
--	CN-008852	06/01/2022	AXL	AAH	ORIGINATED AT PD&R CARROLLTON, TX



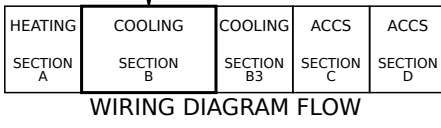
**NOTES**

1	RT6 REMOTE MOUNT WIRING
2	MOVE WIRES FROM 240 TO 208 TAP ON TRANSFORMER FOR 208 VOLT APPLICATIONS
3	W/O HUMIDITROL, W/O PHASE DETECTION - T1 CONNECTED TO J/P395-1,2,3,4
4	PHASE DETECTION - T1 CONNECTED TO J/P395-1,2. T43 CONNECTED TO J/P395-3,4
5	HUMIDITROL - T1 CONNECTED TO J/P395-1,2. T43 CONNECTED TO J/P395-3,4 & J/P394-2,5. L14 CONNECTED TO J/P394-1,4

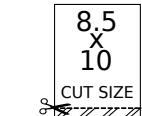
**KEY LIST**

LOCATION	COMPONENT DESCRIPTION
AA01,02,03	<b>A55</b> CONTROL BOARD, MAIN
HH07	<b>AM1, AM2</b> AIR MONITOR, SUPPLY/RETURN, IAQ-TVOC
BB07	<b>B1</b> COMPRESSOR 1
HH01,EE06	<b>B3</b> MOTOR, BLOWER
GG02,DD07	<b>B4</b> MOTOR, OUTDOOR FAN 1
HH06	<b>B10</b> MOTOR, EXHAUST FAN 1
HH06	<b>C6</b> CAPACITOR, EXHAUST FAN 1
CC05	<b>F57</b> FUSE, T5 TRANSFORMER PRIMARY
BB07	<b>HR1</b> HEATER, COMPRESSOR 1
BB04,05,06	<b>K1</b> CONTACTOR, COMPRESSOR 1
HH04,05	<b>K65</b> RELAY, EXHAUST FAN 1
BB04,06	<b>K191</b> RELAY, CRANKCASE HEATER 1
FF04	<b>L14</b> VALVE, SOLENOID, REHEAT COIL 1
CC04	<b>L34</b> VALVE, SOLENOID, 2 STG COMPRESSOR
EE01	<b>RT6</b> SENSOR, A55 DISCHARGE (IIMC)
CC01	<b>RT17</b> SENSOR, OUTSIDE AIR TEMP
EE02	<b>RT46</b> SENSOR, SAT. SUCT TEMP, COMP 1
CC02	<b>RT48</b> SENSOR, SAT. LIQUID TEMP, COMP 1
AA01	<b>S4</b> LIMIT, HI PRESS. SWITCH, COMP 1
DD04	<b>S87</b> SWITCH, LOW PRESS., COMP 1
DD04	<b>T1</b> TRANSFORMER, CONTROL
DD05	<b>T5</b> TRANSFORMER, MOTOR
EE04	<b>T43</b> TRANSFORMER, REHEAT

**10** Model: LGT, LCT 036H - 072H G VOLT  
 COOLING - EBM BLOWER WITHOUT HIGHER SCCR  
 Voltage: 460V/3~60Hz (G)  
 Supersedes: N/A Form No: 538190-01 Rev: 0



**WARNING**  
 DISCONNECT ALL POWER BEFORE SERVICING.  
 ELECTRIC SHOCK HAZARD, CAN CAUSE INJURY OR DEATH. UNIT MUST BE GROUNDED IN ACCORDANCE WITH NATIONAL AND LOCAL CODES.  
 FOR USE WITH COPPER CONDUCTORS ONLY. REFER TO UNIT RATING PLATE FOR MINIMUM CIRCUIT AMPACITY AND MAXIMUM OVERCURRENT PROTECTION SIZE.  
 IF ANY WIRE IN THIS APPLIANCE IS REPLACED, IT MUST BE REPLACED WITH WIRE OF LIKE SIZE, RATING AND INSULATION THICKNESS.



REV	EC NO.	DATE	BY	APVD	REVISION NOTE
--	CN-008852	06/01/2022	AXL	AAH	ORIGINATED AT PD&R CARROLLTON, TX